

**plustek**

 [www.plustek.com](http://www.plustek.com)



**plustek** 2008



ALLAE-00105

© 2008 by Plustek Inc. All rights reserved. All registered trademarks are the property of their respective owners.

EUROPE 



## Plustek Inc.

Respected as the world's leading image solution provider, Plustek manufactures and ships high quality scanners and other imaging products to buyers worldwide, reaching millions of users.

In business since 1986, Plustek began as an original equipment manufacturer (OEM) for many large companies, producing innovative lines including scanners, IP cameras, servers and imaging related products. Through dedicated design innovation with strict and high quality manufacturing standards, Plustek has grown to become one of the largest image solution providers in the world.

In addition to sales and supporting offices worldwide, China-based factories and offices provide just-in-time manufacturing and superior engineering. This allows Plustek to introduce out-standing new products to the market in high quality and outstanding after sales services.

## A Leader in Imaging Technology

Plustek has been introducing revolutionary scanners for years, and our high-quality products not only meet customers' requirements, but also provide lots of extras.

While satisfying customers' needs is our first priority, Plustek has also set several 'firsts' in the scanner industry.

- ▶ 2006 First compact design duplex scanners
- ▶ 2005 Low cost enterprise-level video conference solution
- ▶ 2004 Dedicated low-cost book scanner
  - 7200dpi film scanner, highest resolution in market
  - 3 axis (pan, tilt, focus) webcam
  - A5 flatbed scanner
- ▶ 2003 Slimmest CIS flatbed scanner
- ▶ 2002 Smallest A4 mobile scanner
- ▶ 2001 Smallest business card reader
- ▶ 1999 Multi-function peripheral (Taiwan's first, world's second)
  - Smallest CCD flatbed scanner
- ▶ 1998 Affordable multi-imaging flatbed scanner
- ▶ 1997 A3 size flatbed scanner
- ▶ 1996 EPP slim flatbed scanner
- ▶ 1995 Personal page scanner
- ▶ 1994 Multi-function color scanner
- ▶ 1993 Power-cordless ADF scanner
- ▶ 1992 Color sheetfed scanner
- ▶ 1990 Grayscale sheetfed scanner

## Office Center

### Smart Office Series

SmartOffice PS286	03
SmartOffice PS281	04
SmartOffice PL7000/PL3000/PL1200	05
SmartOffice PL812/PL806/PL1500	06
SmartOffice PL2546	07

### Knowledge Office Series

OpticBook 3600/3600 Plus/3600 Corporate	08
OpticBook 4600	09
BookReader V100	10

### Mobile Office Series

MobileOffice D28/D28 Corporate	11
MobileOffice M12/M12 Plus/M12 Corporate	12
MobileOffice D600	13
OptiCard 820	14
OptiCard 610	15

### Document Server Series

DocServ W1000	16
---------------	----

## Imaging Center

### OpticFilm Series

OpticFilm 7200	17
OpticFilm 7200i SE/7200i	18
OpticFilm 7300	19
OpticFilm 7500i SE/7500i AI	20

### OpticPro Series

OpticPro A320	21
OpticPro A360	22
OpticPro S28/ST28	23
OpticPro ST48	24
OpticPro ST64+	25

### OpticSlim Series

OpticSlim 2400+	26
OpticSlim 2420+	27
OpticSlim 500	28
OpticSlim 550	29

## Communication Center

### Video Innovation

TVcam VD100	30
-------------	----

### Security Solution

IPcam P1100	31
IPcam P1000A	32
IPcam P1100A	33
NVR4000	34

### Corporate Communications Solution

Plus@com PC2000	35
-----------------	----

### Multi-Functional Appliance Solution

MultiServer MFA1000S	36
----------------------	----

## SmartOffice PS286

### Features

- Duplex Color Scan, 25 PPM / 25 IPM Scan Speed, 50 Sheet ADF Capacity
- Business Cards, ID Cards and Credit Cards Scan Available
- A3-Size Document Scan Available, OCR/BCR Application Interfaces
- Power Saving – No Warm Up Needed
- Simple Steps of Cleaning Up, Caring, and Maintenance
- Small Footprint – Ideal for Receptionist/Administrative Desk
- Single-Touch Function Buttons – Scan, OCR, Copy, Email, PDF and Custom
- Easy Configure of Each Single-Touch Function Buttons with AP Software Bundles
- TWAIN and WIA Drivers – Allows Full Document Management Solutions Implementations



### Specification

Technology	CIS
Optical Resolution	600 dpi
Scan Modes	Color: Input 48-bit; Output 24-bit Grayscale: Input 16-bit; Output 8-bit Black & White: 1-bit
ADF Feeder Capacity	50 sheets (A4/Letter, 70 g/m <sup>2</sup> or 18 lbs) 20 sheets (Business Cards)
ADF Scanning Speed	25 PPM/IPM (200 dpi, Grayscale mode, A4)
Scan Area (W x L)	Maximum 216 x 356 mm (8.5" x 14") Minimum 13.2 x 13.2 mm (0.52" x 0.52")
Acceptable Paper Sizes (W x L)	Maximum 220 x 356 mm (8.66" x 14") Minimum 50.8 x 50.8 mm (2" x 2")
Acceptable Paper Quantity	50 Pages (70g/m <sup>2</sup> Paper, Max. Thickness Under 0.2 Inches<5mm>) 20 Pages (Business Card)
Acceptable paper weight	50 to 105 g/m <sup>2</sup> (14 to 281 lb)
Action Button	Scan, Up, Down
Daily Duty Scan	1500 pages
Power Supply	Input Voltage: 100Vac~240Vac (-10% to +10%) Output Voltage: 24V, 0.75A
Environment Requirement	WEEE/ ROHS
Interface	USB 2.0
Net Weight	1.66 Kg (3.66 lbs) Without Stacker
Dimension (WxDxH)	263 x 127.5 x 148 mm (10.36" x 5.02" x 5.83"), Without Stacker
Protocols	TWAIN Compliant
OS	Windows XP, 2000, Vista Compatible
Software Bundled	Plustek DocAction Plustek DICapture Adobe Acrobat Reader ABBYY FineReader 6.0 Sprint Plus Hotcard BCR NewSoft Presto! ImageFolio NewSoft Presto! PageManager

## SmartOffice PS281

### Features

- Simplex Color Scan, 20 PPM Scan Speed, 50 Sheet ADF Capacity
- Business Cards Scan Available
- OCR/BCR Application Interfaces
- Power Saving – No Warm Up Needed
- Single-Touch Function Buttons – Scan, PDF & Custom
- Simple Steps of Cleaning Up, Caring, and Maintenance
- Small Footprint – Ideal for Receptionist/Administrative Desk
- TWAIN and WIA Drivers – Allows Full Document Management Solutions Implementations



### Specification

Technology	CIS
Optical Resolution	600 dpi
Scan Modes	Color: Input 48-bit; Output 24-bit Grayscale: Input 16-bit; Output 8-bit Black & White: 1-bit
ADF Feeder Capacity	50 sheets (A4/Letter, 70 g/m <sup>2</sup> or 18 lbs) 20 sheets (Business Cards)
ADF Scanning Speed	20 PM (200 dpi, Grayscale mode, A4)
Scan Area (W x L)	Maximum 216 x 356 mm (8.5" x 14") Minimum 13.2 x 13.2 mm (0.52" x 0.52")
Acceptable Paper Sizes (W x L)	Maximum 220 x 356 mm (8.66" x 14") Minimum 50.8 x 50.8 mm (2" x 2")
Acceptable Paper Quantity	50 Pages (70g/m <sup>2</sup> Paper, Max. thickness Under 0.2 Inches<5mm>) 20 Pages (Business Cards)
Acceptable paper weight	50 to 105 g/m <sup>2</sup> (14 to 281 lb)
Action Button	File, Scan, Custom
Daily Duty Scan	1500 pages
Power Supply	Input Voltage: 100V~240V Output Voltage: 24V, 0.75A
Environment Requirement	WEEE/ ROHS
Interface	USB 2.0
Net Weight	1.66 Kg (3.66 lbs) Without Stacker
Dimension (WxDxH)	263 x 127.5 x 148 mm (10.36" x 5.02" x 5.83"), Without Stacker
Protocols	TWAIN Compliant
OS	Windows XP, 2000, Vista Compatible
Software Bundled	Plustek DocAction Plustek DICapture Adobe Acrobat Reader ABBYY FineReader 6.0 Sprint Plus Hotcard BCR NewSoft Presto! ImageFolio NewSoft Presto! PageManager

## SmartOffice PL7000/PL3000/PL1200

### Features

- Simplex Color Scan, 80 Sheet ADF Capacity
- 70PPM / 30PPM / 12 PPM Scan Speed
- Legal Size & Wider Paper Documents Support (245 mm / 9.65")
- Multi-language User Interface Support
- Easy Configure of Each Single-Touch Function Buttons with AP Software Bundles
- TWAIN and WIA Drivers – Allows Full Document Management Solutions Implementations



### Specification

Scanning Type		Color CCD
Optical Resolution		PL 7000 – 600 dpi PL3000 - 1200 dpi PL1200 – 1200 dpi
Hardware Resolution	Flatbed	PL7000 - 600 x 600 dpi PL3000 / PL1200 – 1200 x 1200 dpi
	ADF	600 x 600 dpi
Scan Modes		Color: Input 48-bit; Output 24-bit Grayscale: Input 16-bit; Output 8-bit Black & White: 1-bit
ADF	Feeder Capacity	80 sheets (A4/Letter, 70 g/m2 or 18 lb.)
	Scanning speed	PL7000 – 70 ppm PL3000 – 30 ppm PL1200 – 12 ppm 200dpi @A4, grayscale mode
	Scanning Area	Maximum 216 x 356 mm (8.5" x 14") Minimum 90 x 114 mm (3.55" x 4.5")
	Acceptable Paper Size	Maximum 245 x 356 mm (9.65" x 14") Minimum 90 x 114 mm (3.55" x 4.5")
	Acceptable Paper Weight	50 to 120 g/m <sup>2</sup> (14 to 32 lb.)
	Daily Duty Scan (Pages)	PL7000 – 6000 PL3000 – 3000 PL1200 – 1000
Flatbed	Scanning Area (WxL)	Maximum 216 x 297 mm (8.5" x 11.69") Minimum 12.7 x 12.7 mm (0.5" x 0.5")
	Acceptable Paper Sizes(W x L)	Up to A4/Letter size (8.5" x 11.69")
Power Supply		Input voltage: 100V ~240V Output voltage/watt: 24V, 1.67A
Environment Requirement		WEEE/ ROHS
Interface		USB 2.0
Net Weight		5.5 Kgs (12.1 Lbs)
Dimension (WxDxH)	Without ADF Input Tray	468 x 341.5 x 195 mm (18.43" x 13.44" x 7.68")
	With ADF Input Tray:	468 x 341.5 x 320 mm (18.43" x 13.44" x 12.60")
Protocols		TWAIN Compliant
OS		Windows XP, 2000, Vista Compatible
Software Bundled		Plustek DocAction Plustek DICapture Adobe Acrobat Reader NewSoft Presto! ImageFolio NewSoft Presto! PageManager I.R.I.S. Readiris Pro 10 Corporate Edition

## SmartOffice PL812/ PL806/PL1500

### Features

- Simplex Color Scan, 50 Sheet ADF Capacity
- 8PPM / 8PPM / 15PPM Scan Speed
- Multi-language User Interface Support
- Simple Steps of Cleaning Up, Caring, and Maintenance
- Easy Configure of Each Single-Touch Function Buttons with AP Software Bundles
- TWAIN and WIA Drivers – Allows Full Document Management Solutions Implementations



### Specification

Scanning Type		Color CCD
Optical Resolution		PL 806 – 600 dpi PL 812 / PL1500 – 1200 dpi
Hardware Resolution	Flatbed	PL806 – 600 x 1200 dpi PL812 / PL1500 – 1200 x 1200 dpi
	ADF	600 x 600 dpi
Scan Modes		Color: Input 48-bit; Output 24-bit Grayscale: Input 16-bit; Output 8-bit Black & White: 1-bit
ADF	Feeder Capacity	50 sheets (A4/Letter, 70 g/m2 or 18 lb.)
	Scanning speed	PL806 – 8 ppm PL812 – 8 ppm PL1500 – 15 ppm Simplex, 200dpi @A4, grayscale mode
	Scanning Area	Maximum 216 x 356 mm (8.5" x 14") Minimum 90 x 114 mm (3.55" x 4.5")
	Acceptable Paper Size	Maximum 220 x 356 mm (8.66" x 14") Minimum 90 x 114 mm (3.55" x 4.5")
	Acceptable Paper Weight	50 to 120 g/m <sup>2</sup> (14 to 32 lb.)
	Daily Duty Scan (Pages)	PL806 – 1000 PL812 – 1000 PL1500 – 1500
Flatbed	Scanning Area (WxL)	Maximum 216 x 297 mm (8.5" x 11.69") Minimum 12.7 x 12.7 mm (0.5" x 0.5")
	Acceptable Paper Sizes	Up to A4/Letter size (8.5" x 11.69")
Action Buttons		Scan, Copy, OCR, File, Custom
Power Supply		Input voltage: 100V ~240V Output voltage/watt: 24V, 0.75A
Environment Requirement		WEEE/ ROHS
Interface		USB 2.0
Net Weight		4.8 Kgs (10.56 Lbs)
Dimensions (WxDxH)	Without ADF Input Tray	468 x 347 x 175 mm (18.43" x 13.66" x 6.89")
	With ADF Input Tray	468 x 347 x 300 mm (18.43" x 13.66" x 11.81")
Protocols		TWAIN Compliant
OS		Windows XP, 2000, Vista Compatible
Software Bundled	PL806 / PL812	Plustek DocAction Plustek DICapture Adobe Acrobat Reader NewSoft Presto! ImageFolio NewSoft Presto! PageManager ABBYY FineReader 6.0 Sprint Plus
	PL1500	Plustek DocAction Plustek DICapture Adobe Acrobat Reader NewSoft Presto! ImageFolio NewSoft Presto! PageManager I.R.I.S. Readiris Pro 10 Corporate Edition

## SmartOffice PL2546

### Features

- Duplex Color Scan, 50 Sheet ADF Capacity
- 25PPM / 46 IPM Scan Speed
- Multi-language User Interface Support
- Simple Steps of Cleaning Up, Caring, and Maintenance
- Easy Configure of Each Single-Touch Function Buttons with AP Software Bundles
- TWAIN and WIA Drivers – Allows Full Document Management Solutions Implementations



### Specification

Scanning Type		CIS
Optical Resolution		1200 dpi
Hardware Resolution	Flatbed	1200 dpi x 1200 dpi
	ADF	600 dpi x 600 dpi
Scan Modes		Color: Input 48-bit; Output 24-bit Grayscale: Input 16-bit; Output 8-bit Black & White: 1-bit
ADF	Feeder Capacity	50 sheets (A4/Letter, 70 g/m <sup>2</sup> or 18 lbs) 20 sheets (Business Cards)
	Scanning speed	25 ppm / 46 ipm @200dpi grayscale mode
	Scanning Area	Maximum 216 x 356 mm (8.5" x 14") Minimum 13.2 x 13.2 mm (0.52" x 0.52")
	Acceptable Paper Size	Maximum 220 x 356 mm (8.66" x 14") Minimum 50.8 x 50.8 mm (2" x 2")
	Acceptable Paper Weight	50 to 105 g/m <sup>2</sup> (14 to 28 lb.)
	Daily Duty Scan	1500 pages
Flatbed	Scanning Area (WxL)	Maximum 216 x 297 mm (8.5" x 11.69") Minimum 12.7 x 12.7 mm (0.5" x 0.5")
	Acceptable Paper Sizes	Up to A4/Letter size (8.5" x 11.69")
Action Buttons		Scan, Up, Down
Power Supply		Input voltage: 100V ~240V Output voltage/watt: 24V, 0.75A
Environment Requirement		WEEE / ROHS
Interface		USB 2.0
Net Weight		4.5 Kgs (9.92 Lbs)
Dimensions (WxDxH)		481 x 327 x 203 mm (18.93" x 12.87" x 7.98")
Protocols		TWAIN Compliant
OS		Windows XP, 2000, Vista Compatible
Software Bundled		Plustek DocAction Plustek DICapture Adobe Acrobat Reader NewSoft Presto! ImageFolio NewSoft Presto! PageManager I.R.I.S. Readiris Pro 10 Corporate Edition ABBYY FineReader 6.0 Sprint Plus

## OpticBook 3600



## OpticBook 3600 Plus / 3600 Corporate

### Features

- Shadow Elimination Element (SEE™) Technology
- Multifunction one-touch buttons
- Intellilock lock/unlock mechanism protects the scanner's valuable optical system
- Black Image Enhancement Backing to insert between book pages for clearer scans of thin pages
- Fast scan speed 8 sec. for an A4-size color, grayscale, B/W scan at 300 dpi



### Specification

Scanning Type		Color CCD Flatbed Scanner
Optical Resolution		1200 dpi
Hardware Resolution		1200 dpi x 1200 dpi
Scan Modes		Color: 48-bit input, 24/48-bit output Grayscale: 16-bit input, 8/16-bit output B/W: 1-bit
Scan Speed		9 sec, A4 color scan, 300 dpi 8 sec, A4 Grayscale scan, 300 dpi 8 sec, A4 B&W scan, 300 dpi
Acceptable Paper Sizes		Up to A4/Letter size (8.5" x 11.69")
Action Buttons	Paper Mode	Custom, E-Mail, Copy, OCR, Scan
	Book Mode	Book Pilot, Preview, Color Scan, Grayscale Scan, Text Scan
Power Supply		Input voltage: 100V ~240V Output voltage/watt: 15V, 1.0A
Environment Requirement		WEEE / ROHS
Interface		USB 2.0
Net Weight		3.4 Kgs (7.56 Lbs)
Dimension (D x W x H)		453 x 285 x 105mm (18"x11"x4")
Protocols		TWAIN Compliant
OS		Windows XP, 2000, Vista Compatible
Software Bundled	OB3600	Plustek BookPilot Adobe Acrobat Reader NewSoft Presto! ImageFolio NewSoft Presto! PageManager ABBYY FineReader 5.0 Sprint
	OB3600 Plus	Plustek DigiBook Adobe Acrobat Reader NewSoft Presto! ImageFolio NewSoft Presto! PageManager ABBYY FineReader 5.0 Sprint
	OB3600 Corp	Plustek DigiBook Adobe Acrobat Reader NewSoft Presto! ImageFolio NewSoft Presto! PageManager ABBYY FineReader 5.0 Sprint I.R.I.S. Readiris Pro 10 Corporate Edition

## OpticBook 4600

### Features

- Shadow Elimination Element (SEE™) Technology
- Astonishing 3.2 sec scanning speed (color, 300dpi)
- Multifunction one-touch buttons
- Scan to searchable PDF
- IRIS Readiris Pro 10 Corporate Edition (Support up to 127 languages)



### Specification

Scanning Type	Color CCD Flatbed Scanner
Optical Resolution	1200 dpi
Hardware Resolution	1200 dpi x 1200 dpi
Scan Modes	Color: 48-bit input, 24/48-bit output Grayscale: 16-bit input, 8/16-bit output B/W: 1-bit
Scan Speed	3.2 sec, A4 color scan, 300 dpi 2.7 sec, A4 Grayscale scan, 300 dpi 2.7 sec, A4 B&W scan, 300 dpi
Acceptable Paper Sizes	Up to A4/Letter size (8.5" x 11.69")
Action Button	Scan
Power Supply	Input voltage: 100V ~240V Output voltage/watt: 15V, 1.0A
Environment Requirement	WEEE / ROHS
Interface	USB 2.0
Net Weight	3.4 Kgs (7.56 Lbs)
Dimensions (D x W x H)	453 x 285 x 105mm (18"x11"x4")
Protocols	TWAIN Compliant
OS	Windows XP, 2000, Vista Compatible
Software Bundled	Plustek DocAction Adobe Acrobat Reader NewSoft Presto! ImageFolio NewSoft Presto! PageManager I.R.I.S. Readiris Pro 10 Corporate Edition

## BookReader V100

### Features

- Shadow Elimination Element (SEE™) Technology
- Natural Voice
- Accurate OCR and auto document orientation
- Magnify tool for visually impaired



### Specification

Scanning Type	Color CCD Flatbed Scanner
Optical Resolution	1200 dpi
Hardware Resolution	1200 dpi x 1200 dpi
Scan Modes	Color: 48-bit input, 24/48-bit output Grayscale: 16-bit input, 8/16-bit output B/W: 1-bit
Scan Speed	9 sec, A4 color scan, 300 dpi 8 sec, A4 Grayscale scan, 300 dpi 8 sec, A4 B&W scan, 300 dpi
Acceptable Paper Sizes	Up to A4/Letter size (8.5" x 11.69")
Action Buttons	Text, PDF Text & Image, PDF Text
Power Supply	Input voltage: 100V ~240V Output voltage/watt: 15V, 1.0A
Environment Requirement	WEEE / ROHS
Interface	USB 2.0
Net Weight	3.4 Kgs (7.56 Lbs)
Dimensions (D x W x H)	453 x 285 x 105mm (18"x11"x4")
Protocols	TWAIN Compliant
OS	Windows XP, 2000, Vista Compatible
Software Bundled	Plustek Book Voice Plustek Magnifier 2.0 ABBYY FineReader 6.0 Sprint Plus



## MobileOffice D28 / D28 Corporate

### Features

- Duplex / Simplex Full Color Scanning
- Special design for Embossed / Plastic card scanning
- Fast Scanning Speed (2.2 sec per page – 28ppm)
- Multi-function with user friendly software
- Scan to Image PDF format for D28, and Scan to Searchable PDF for D28 Corporate



### Specification

Scanning Type	CIS (Duplex)	
Optical Resolution	600 dpi	
Scan Modes	Color: Input 48-bit; Output 24/48-bit Grayscale: Input 16-bit; Output 8/16-bit B/W: 1-bit	
Scan Area	Maximum 216 x 356 mm (8.5"x 14") Minimum 54 x 85 mm (2.13"x 3.35")	
Scan Speed	2.2 Sec per page (28 ppm* /28 ipm*) 200 dpi @A4, grayscale	
Acceptable Paper Sizes	Maximum 240 x 356 mm ( 9.45 x 14") Minimum 54 x 85 mm (2.13"x 3.35")	
Paper Thickness	Paper: 0.05 ~ 0.8 mm (0.001" ~ 0.03") Plastic Card: 0.05 ~ 1.2 mm (0.001" ~ 0.04")	
Action Button	Scan, Simplex, Duplex	
Power Supply	Input Voltage: 100V~240V Output Voltage/watt: 24V, 750mA	
Environment Requirement	WEEE / ROHS	
Interface	USB 2.0	
Net Weight	960 grams (2.11 Lbs)	
Dimensions (D x W x H)	94 x 303 x 60 mm (3.7" x11.9" x2.4")	
Protocols	TWAIN Compliant	
OS	Windows XP, 2000, Vista	
Software Bundled	D28	Plustek DigiDoc NewSoft Presto! PageManager NewSoft Presto! ImageFolio ABBYY FineReader 6.0 Sprint Adobe Acrobat Reader
	D28 Corp	Plustek DigiDoc NewSoft Presto! PageManager NewSoft Presto! ImageFolio I.R.I.S. Readiris Pro 10 Corporate Edition Hotcard BCR Adobe Acrobat Reader

## OpticSlim M12



## OpticSlim M12 Plus



## OpticSlim M12 Corporate



### Features

- Portable Color Scanner
- The weight is less than one pound
- USB BUS powered
- M12 Plus support scan to Image PDF format & provide BCR scanning
- M12 Corporate support scan to searchable Image PDF format

### Specification

Scanning Type	CIS	
Optical Resolution	600 dpi	
Scan Modes	Color: Input 48-bit; Output 24/48-bit Grayscale: 16-bit input, 8/16-bit output Black & White: 1-bit	
Scan Area	216 x 355 mm (8.5" x 14", A4/ Letter Size) TWAIN support length up to 910mm (36")	
Scan Speed	3 pages per minute	
Paper Thickness	0.05 ~ 0.8 mm (0.001" ~ 0.03")	
Action Button	Scan, Custom	
Environment Requirement	WEEE / ROHS	
Interface	USB 1.1 Bus power	
Net Weight	330 grams (0.72 Lbs)	
Dimensions (D x W x H)	47 x 274 x 33.8 mm (1.9" x 10.8" x 1.33" )	
Protocols	TWAIN Compliant	
OS	Window 98/ ME/ 2000/ XP/ Vista	
Software Bundled	M12	Plustek DigiScan NewSoft Presto! PageManager NewSoft Presto! ImageFolio NewSoft Presto! Mr. Photo ABBYY FineReader 6.0 Sprint Adobe Acrobat Reader
	M12 Plus	Plustek DigiScan NewSoft Presto! PageManager NewSoft Presto! ImageFolio Hotcard BCR ABBYY FineReader 6.0 Sprint Adobe Acrobat Reader
	M12 Corporate	Plustek DigiScan NewSoft Presto! PageManager NewSoft Presto! ImageFolio I.R.I.S. Readiris Pro 10 Corporate Edition Hotcard BCR Adobe Acrobat Reader

## MobileOffice D600

### Features

- Fast Speed A6 Size Color Duplex Scanner
- Business card organizer
- Support scan to PDF format
- Ideal for scanning small types of vouchers, receipts and banking checks.



### Specification

Scanning Type	CIS Duplex	
Optical Resolution	600 dpi	
Scan Modes	Color: Input 48-bit; Output 24/48-bit Grayscale: 16-bit input, 8/16-bit output Black & White: 1-bit	
Scan Area	Maximum: 105mm x 148mm (4.1" x 5.8")	
Scan Speed(no calibration)	Simplex Scan	19ppm @300 dpi, color mode 55ppm @300 dpi, grayscale mode
	Duplex Scan	9ppm / 18 ipm @ 300 dpi, color mode 35ppm / 70 ipm @ 300 dpi, grayscale mode
Paper Thickness	Paper : 0.05 ~ 0.8 mm Plastic Card: 0.05 ~ 1.2mm	
Action Button	Scan	
Power Supply	Input Voltage: 100V~240V Output Voltage/watt: 15V, 1A	
Environment Requirement	WEEE / ROHS	
Interface	USB 2.0	
Net Weight	Approximately 450 grams	
Dimensions (D x W x H)	194 x 73 x 54 mm	
Protocols	TWAIN Compliant	
OS	Window 2000/ XP/ Vista	
Software Bundled	Plustek DocAction NewSoft Presto! ImageFolio NewSoft Presto! PageManager ABBYY FineReader 6.0 Sprint Plus BCR Software Adobe Acrobat Reader	

## OptiCard 820

### Features

- A6 Size Color Scanner
- IRIS BCR for organizing business card
- Best assistant for scanning small types of receipts, invoices and photos
- USB BUS powered



### Specification

Scanning Type	CIS
Optical Resolution	600 dpi
Scan Modes	Color: Input 48-bit; Output 24/48-bit Grayscale: 16-bit input, 8/16-bit output Black & White: 1-bit
Scan Area	Maximum: 105mm x 148mm (4.1" x 5.8") Minimum: 33mm x 43mm (1.3" x 1.7") TWAIN support length up to 910 mm (36")
Scan Speed	7 sec @ 300 dpi, grayscale mode 8 sec @ 300 dpi, color mode
Paper Thickness	up to 0.8 mm
Action Button	Scan, BCR
Environment Requirement	WEEE / ROHS
Interface	USB 2.0
Net Weight	194 grams (0.42 Lbs)
Dimensions (D x W x H)	60.5 x 174.5 x 38.5 mm (2.4" x 6.9" x 1.5")
Protocols	TWAIN Compliant
OS	Window 98/ ME/ 2000/ XP/ Vista
Software Bundled	Plustek Smart Touch NewSoft Presto! ImageFolio NewSoft Presto! Mr. Photo I.R.I.S. BCR Adobe Acrobat Reader



## OptiCard 610



### Features

- Palm-Size Scanner
- Best assistant for business card organizer
- USB-Powered



### Specification

Scanning Type	CIS
Optical Resolution	600 dpi
Scan Modes	Grayscale: 16-bit input, 8/16-bit output B/W: 1-bit
Scan Area	Maximum: 54.19mm x 90.42 mm (A8 Size) Minimum: 30mm x 43mm (1.3" x 1.7")
Scan Speed	10 ppm
Paper Thickness	up to 0.4 mm
Action Button	Scan
Environment Requirement	WEEE / ROHS
Interface	USB 1.1 Bus power
Net Weight	78 grams (0.019 Lbs)
Dimensions (D x W x H)	48 x 102 x 24 mm (1.9" x 4" x 1")
OS	Window 98/ ME/ 2000/ XP/ Vista
Software Bundled	Plustek BCR Manager I.R.I.S. BCR Adobe Acrobat Reader

## DocServ W1000

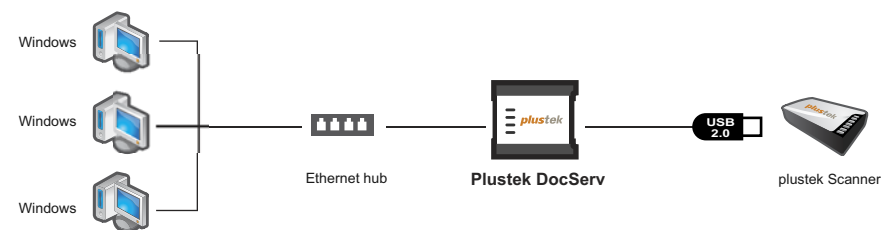
### Features

- Instantly convert the connected device and makes accessible anywhere on your network
- Convert PlusTek USB 2.0 scanners to a shared network resource
- Real-time remote notification of the availability of the connected device
- Allow users to scan and store across a network
- User-friendly design for device management



### Specification

Networking Type	Scanner Server
Form Factor	External
Data Transfer Rate	10/100 Mbps
Data Link Protocol	Fast Ethernet
Connectivity	Wired
Interface	USB 2.0 RJ-45
Transport Protocol	TCP/IP
Cabling Type	Ethernet 10base-T & 100 Base-TX
Power Supply	Input Voltage: 100~240V Output Voltage/watt: 5V, 1.5A
Operating System	Windows 2000 / XP / Vista 32 compatible
Dimensions (W x D x H)	120.5 x 134.5 x 32 mm / 4.7" x 5.2" x 1.2"
Net Weight	254.1g / 115.5lb
Supported Scanners	SmartOffice series OpticBook series OpticFilm series OpticPro A320 and A360 MobileOffice D28 & D28 Corporate



## OpticFilm 7200



### Features

- 7200 dpi high resolution film scanner
- 48-bit color input/out
- Illuminated slide viewer
- Software solution for dust & scratch removal

### Specification

Scanning Type	Color CCD	
Optical Resolution	7200 dpi	
Scan Modes	Color: Input 48-bit; Output 24/48-bit Grayscale: 16-bit input, 8/16-bit output Black & White: 1-bit	
Dynamic Range	3.3	
Illuminated Slide Viewer	38 x 38mm	
Max. scanning area	36.8 x 25.4 mm (1.45 "x 1") for Negative	
Preview Speed (w/o calibration)	Negative Film	Approx 5 sec
	Positive Film	Approx 10 sec
Scan Speed (24Bit Negative)	3600 dpi	Approx 48 sec
	7200 dpi	Approx 112 sec
Action Button	IntelliScan and QuickScan	
Scanning Method	Single Pass	
Power Supply	Input voltage: 100V ~240V Output voltage/watt: 15V, 1.0A	
Environment Requirement	WEEE / ROHS	
Interface	USB 2.0	
Net Weight	1.35 Kg / 2.97 lb	
Dimensions (D x W x H)	272 x 120 x 119mm (4.73"x10.7"x4.7")	
OS	Windows 2000 / XP / Vista Compatible	
Software Bundled	Plustek Quicksan SilverFast SE 6.5 NewSoft Presto! PageManager NewSoft Presto! ImageFolio Adobe Acrobat Reader	

## OpticFilm 7200i SE



## OpticFilm 7200i



### Features

- 7200 dpi high resolution film scanner
- 48-bit color input/ output
- Hardware and software solution for dust & scratch removal

### Specification

Scanning Type	Color CCD	
Optical Resolution	7200 dpi	
Scan Modes	Color: Input 48-bit; Output 24/48-bit Grayscale: 16-bit input, 8/16-bit output Black & White: 1-bit	
Dynamic Range	3.3	
Max. scanning area	36.8 x 25.4 mm (1.45 "x 1") for Negative	
Preview Speed (w/o calibration)	Negative Film	Approx 5.6 sec
	Positive Film	Approx 6.44 sec
Scan Speed (24Bit Negative)	3600 dpi	Approx 36 sec
	7200 dpi	Approx 68 sec
Action Button	IntelliScan and QuickScan	
Scanning Method	Single Pass	
Infrared Channel	Built-in	
Power Supply	Input voltage: 100V ~240V Output voltage/watt: 15V, 1.0A	
Environment Requirement	WEEE / ROHS	
Interface	USB 2.0	
Net Weight	1.4 Kg / 3.1 lb	
Dimensions (D x W x H)	272 x 120 x 119mm (4.73"x10.7"x4.7")	
OS	Windows 2000 / XP / Vista Compatible	
Software Bundled	OF7200i SE	Plustek Quicksan SilverFast SE + iSRD NewSoft Presto! PageManager NewSoft Presto! ImageFolio Adobe Acrobat Reader
	OF7200i	Plustek Quicksan SilverFast Ai + iSRD NewSoft Presto! PageManager NewSoft Presto! ImageFolio Adobe Acrobat Reader

## OpticFilm 7300

### Features

- 7200 dpi high resolution film scanner
- Illuminated slide viewer
- 48-bit color input/ output
- Software solution for dust & scratch removal
- Multi-Exposure for Higher-Dynamic-Range and Noise Removal



### Specification

Scanning Type	Color CCD	
Optical Resolution	7200 dpi	
Scan Modes	Color: Input 48-bit; Output 24/48-bit Grayscale: 16-bit input, 8/16-bit output Black & White: 1-bit	
Dynamic Range	3.5	
Illuminated Slide Viewer	38 x 38mm	
Multi-Exposure and Multi-Sampling	Included	
Max. scanning area	36.8 x 25.4 mm (1.45 "x 1") for Negative	
Preview Speed (w/o calibration)	Negative Film	Approx 8.7 sec
	Positive Film	Approx 6.25 sec
Scan Speed (24Bit Negative)	3600 dpi	Approx 87 sec
	7200 dpi	Approx 226 sec
Action Button	IntelliScan and QuickScan	
Scanning Method	Single Pass	
Power Supply	Input voltage: 100V ~240V Output voltage/watt: 15V, 1.0A	
Environment Requirement	WEEE / ROHS	
Interface	USB 2.0	
Net Weight	1.5 kg / 3.3 lbs	
Dimensions (D x W x H)	272 x 120 x 119mm (4.73"x10.7"x4.7")	
OS	Windows 2000 / XP / Vista Compatible MAC 10.3.9 and higher incl. Leopard	
Software Bundled	Plustek Quicksan SilverFast SE Plus (ME) NewSoft Presto! PageManager NewSoft Presto! ImageFolio Adobe Acrobat Reader	

## OpticFilm 7500i SE/7500i AI

### Features

- 7200 x 7200 dpi optical resolution
- 48-bit color input/ output
- Hardware & software solution for dust & scratch removal
- Multi-Exposure for Higher-Dynamic-Range and Noise Removal
- OF7500i AI includes 35mm calibration slide for color accuracy



### Specification

Scanning Type	Color CCD	
Optical Resolution	7200 dpi	
Scan Modes	Color: Input 48-bit; Output 24/48-bit Grayscale: 16-bit input, 8/16-bit output Black & White: 1-bit	
Dynamic Range	3.5	
Multi-Exposure and Multi-Sampling	Included	
Max. scanning area	36.8 x 25.4 mm (1.45 "x 1") for Negative	
Preview Speed (w/o calibration)	Negative Film	Approx 11.38 sec
	Positive Film	Approx 11 sec
Scan Speed (24Bit Negative)	3600 dpi	Approx 73 sec
	7200 dpi	Approx 332 sec
Action Button	IntelliScan and QuickScan	
Scanning Method	Single Pass	
Power Supply	Input voltage: 100V ~240V Output voltage/watt: 15V, 1.0A	
IT8 Target (For OF 7500i AI only)	Included	
Infrared Channel	Built-in	
Environment Requirement	WEEE / ROHS	
Interface	USB 2.0	
Net Weight	1.6 Kg / 3.5 lb	
Dimensions (D x W x H)	272 x 120 x 119mm (4.73"x10.7"x4.7")	
OS	Windows 2000 / XP / Vista Compatible MAC 10.3.9 and higher incl. Leopard	
Software Bundled	OF7500i SE	Plustek Quicksan SilverFast SE Plus ME + iSRD NewSoft Presto! PageManager NewSoft Presto! ImageFolio Adobe Acrobat Reader
	OF7500i AI	Plustek Quicksan SilverFast Ai Studio iSRD+Multi-Exposure NewSoft Presto! PageManager NewSoft Presto! ImageFolio Adobe Acrobat Reader

## OpticPro A320

### Features

- Hi-Speed scanning (11.2 seconds for 300 dpi, A3 color size)
- One-touch button design to personalized the program
- Function button design for Scan, OCR, Copy, File, Email, Custom 1 & Custom 2
- Software including simple and easy-to-use image processing and automatic text recognition
- Multilingual user's interface
- Large format scanning area (A3 size, 304.8mm x 431.8mm or 12" x 17")



### Specification

Scanning Type	Stagger CCD (R, G, B) Technology
Optical Resolution	1600 dpi
Scan Modes	Color: Input 48-bit; Output 24-bit Grayscale: 16-bit input, 8-bit output Black & White: 1-bit
Scan Speed	11.2 sec @ 300dpi A3, color / grayscale / B/W mode
Max. scanning area	A3 , 304.8mm x 431.8mm (or 12" x 17")
Action Button	Scan, OCR, Copy, File, Email, Custom1, & Custom 2
Power Supply	Input Voltage: 100~240V Output Voltage/watt: 24V / 1.5A
Scanning Method	Single Pass
Environment Requirement	WEEE / ROHS
Interface	USB 2.0
Net Weight	7.5kg (16.52 Lb)
Dimensions (D x W x H)	623 x 400 x 133mm / 24.5" x 15.7" x 5.2"
Protocols	TWAIN Compliant
OS	Windows 2000 / XP / Vista Compatible
Software Bundled	Plustek DI Capture Plustek DocAction NewSoft Presto! PageManager NewSoft Presto! ImageFolio ABBYY FineReader 6.0 Sprint Plus Adobe Acrobat Reader

## OpticPro A360

### Features

- Hi-Speed scanning (2.4 seconds for 300 dpi, A3 color size)
- One-touch button design to personalized the program
- Function button design for Scan, OCR, Copy, File, Email, Custom 1 & Custom 2
- Document management software bundled
- Multilingual user's interface
- Large format scanning area (A3 size, 304.8mm x 431.8mm or 12" x 17")



### Specification

Scanning Type	CCD
Hardware Resolution	600 dpi x 1200 dpi
Scan Modes	Color: Input 48-bit; Output 24-bit Grayscale: 16-bit input, 8-bit output Black & White: 1-bit
Scan Speed	2.48 sec @300dpi, A3, color mode 1.65 sec @300dpi, A3, grayscale / B/W mode
Max. scanning area	A3 , 304.8mm x 431.8mm (or 12" x 17")
Action Button	Scan, OCR, Copy, File, Email, Custom1, & Custom 2
Power Supply	Input Voltage: 100~240V Output Voltage/watt: 24V / 1.5A
Scanning Method	Single Pass
Environment Requirement	WEEE / ROHS
Interface	USB 2.0
Net Weight	7.7kg (16.96 Lb)
Dimensions (D x W x H)	623 x 400 x 133mm / 24.5" x 15.7" x 5.2"
Protocols	TWAIN Compliant
OS	Windows 2000 / XP / Vista Compatible
Software Bundled	Plustek DI Capture Plustek DocAction NewSoft Presto! PageManager NewSoft Presto! ImageFolio I.R.I.S. Readiris Pro 10 Corporate Edition Adobe Acrobat Reader

## OpticPro S28/ST28

### Features

- A4 Flatbed scanner, USB2.0
- Optical resolution 1200dpi
- Design for home and SOHO users
- Reliable, easy-to-use, multi-functional and smart
- ST28 provide transparency adapter for film and slide scanning



### Specification

Scanning Type	CCD
Hardware Resolution	1200 dpi
Scan Modes	Color: Input 48-bit; Output 24/48-bit Grayscale: 16-bit input, 8/16-bit output Black & White: 1-bit
Max. scanning area	A4/ Letter 216 × 297 mm (8.5" x 11.69")
Action Button	Copy, OCR, Power Save, E-Mail, and Custom
Scanning Method	Single Pass
Power Supply	Input Voltage: 100~240V Output Voltage/watt: 15V / 1.0A
Environment Requirement	WEEE / ROHS
Interface	USB 2.0
Net Weight	S28 - 2.2 Kg (4.8 lb) ST28 - 2.6 Kg (5.7 lb)
Dimensions (D x W x H)	S28 - 435 × 260 × 62 mm (17.1 " x 10.2" x 2.4") ST28 - 435 × 260 × 80 mm (17.1 " x 10.2" x 3.1")
Transparency Holder (for ST28 only)	35mm, mounted slide, 120/220 (6x6, 6x9)
Protocols	TWAIN Compliant
OS	Windows 2000 / XP / Vista Compatible
Software Bundled	Plustek Action Manager 32 NewSoft Presto! PageManager NewSoft Presto! ImageFolio NewSoft Presto! Mr. Photo ABBYY FineReader 6.0 Sprint Adobe Acrobat Reader

## OpticPro ST48



### Features

- A4 Flatbed scanner, USB2.0
- Optical resolution 2400 dpi
- TPA included, transparency scanning area up to 5"× 7"
- 2 film holders bundled, holding various sizes of negatives/slides
- 35mm filmstrips, mounted slides, 120/220, up to 5"× 7"transparencies



### Specification

Scanning Type	CCD
Hardware Resolution	2400 dpi
Scan Modes	Color: Input 48-bit; Output 24/48-bit Grayscale: 16-bit input, 8/16-bit output Black & White: 1-bit
Max. scanning area	A4/ Letter 216 × 297 mm (8.5" x 11.69")
Action Button	Copy, OCR, Power Save, E-Mail, and Custom
Scanning Method	Single Pass
Power Supply	Input Voltage: 100~240V Output Voltage/watt: 15V / 1.0A
Environment Requirement	WEEE / ROHS
Interface	USB 2.0
Net Weight	2.85Kg (5.5 lb)
Dimensions (D x W x H)	435 × 260 × 80 mm (17.1 " x 10.2" x 3.1")
Transparency Holder	35mm, mounted slide, 120/220 (6x6, 6x9), up to 5" x 7"
Protocols	TWAIN Compliant
OS	Windows 2000 / XP / Vista Compatible
Software Bundled	Plustek Action Manager 32 NewSoft Presto! PageManager NewSoft Presto! ImageFolio NewSoft Presto! Mr. Photo ABBYY FineReader 6.0 Sprint Adobe Acrobat Reader

## OpticPro ST64+



### Features

- Optical resolution 3200 dpi, USB2.0
- TPA included, transparency scanning area up to 5" x 7"
- 3 film holders bundled, holding various sizes of negatives/slides
- 35mm negatives/ slides, filmstrips up to 12 frames (3 x 4 frames)



### Specification

Scanning Type	CCD
Hardware Resolution	3200 dpi
Scan Modes	Color: Input 48-bit; Output 24/48-bit Grayscale: 16-bit input, 8/16-bit output Black & White: 1-bit
Max. scanning area	A4/ Letter 216 x 297 mm (8.5" x 11.69")
Action Button	Copy, OCR, Power Save, E-Mail and Custom
Scanning Method	Single Pass
Power Supply	Input Voltage: 100~240V Output Voltage/watt: 15V / 1.0A
Environment Requirement	WEEE / ROHS
Interface	USB 2.0
Net Weight	2.8 Kg (6.2 lb)
Dimensions (D x W x H)	440 x 265 x 79 mm (17.3" x 10.4" x 3.1")
Transparency Holder	35mm, mounted slide, 120/220 (6x6, 6x9), up to 5" x 7"
Protocols	TWAIN Compliant
OS	Windows 2000 / XP / Vista Compatible
Software Bundled	Plustek Action Manager 32 NewSoft Presto! PageManager NewSoft Presto! ImageFolio NewSoft Presto! Mr. Photo ABBYY FineReader 5.0 Sprint Adobe Acrobat Reader

## OpticSlim 2400+

### Features

- Ultra slim shape-only 3.3 cm tall
- Optical resolution 1200 dpi, USB1.1
- 5 one-touch action buttons
- USB BUS powered



### Specification

Scanning Type	CIS
Hardware Resolution	1200 dpi
Scan Modes	Color: Input 48-bit; Output 24/48-bit Grayscale: 16-bit input, 8/16-bit output Black & White: 1-bit
Max. scanning area	A4/ Letter 216 x 297 mm (8.5" x 11.69")
Action Button	Copy, OCR, E-Mail, Custom and Scan
Scanning Method	Single Pass
Environment Requirement	WEEE / ROHS
Interface	USB 1.1 BUS powered
Net Weight	1.4 Kg(3.1 lb)
Dimensions (D x W x H)	278 x 257 x 33 mm(10.9" x 10.1" x1.3" )
Protocols	TWAIN Compliant
OS	Windows 2000 / XP / Vista Compatible
Software Bundled	Plustek Action Manager 32 NewSoft Presto! PageManager NewSoft Presto! ImageFolio NewSoft Presto! Mr. Photo ABBYY FineReader 6.0 Sprint Adobe Acrobat Reader



## OpticSlim 2420+

### Features

- Ultra slim shape-only 3.3 cm tall
- Optical resolution 1200 dpi, USB1.1
- Specialized lid hinge
- 5 one-touch action buttons
- USB BUS powered



## OpticSlim 500

### Features

- A5 Size Color Scanning
- Comprehensive Expert for ID/Passport Management
- Lightest and Smallest Portable Design
- Power Saving, Efficient Usage Without Warming
- USB BUS powered



### Specification

Scanning Type	CIS
Hardware Resolution	1200 dpi
Scan Modes	Color: Input 48-bit; Output 24/48-bit Grayscale: 16-bit input, 8/16-bit output Black & White: 1-bit
Max. scanning area	A4/ Letter 216 × 297 mm (8.5" x 11.69")
Action Button	Copy, OCR, E-Mail, Custom and Scan
Scanning Method	Single Pass
Environment Requirement	WEEE / ROHS
Interface	USB 2.0 BUS powered
Net Weight	1.4 Kg(3.1 lb)
Dimensions (D x W x H)	278 × 257 × 33 mm(10.9" x 10.1" x 1.3" )
Protocols	TWAIN Compliant
OS	Windows 2000 / XP / Vista Compatible
Software Bundled	Plustek Action Manager 32 NewSoft Presto! PageManager NewSoft Presto! ImageFolio NewSoft Presto! Mr. Photo ABBYY FineReader 6.0 Sprint Adobe Acrobat Reader

### Specification

Scanning Type	CIS
Hardware Resolution	600 dpi
Scan Modes	Color: Input 48-bit; Output 24/48-bit Grayscale: 16-bit input, 8/16-bit output Black & White: 1-bit
Max. scanning area	A5 / 216 × 140 mm (8.5"x 5.55")
Action Button	Copy, OCR, E-Mail, Custom and Scan
Scanning Method	Single Pass
Environment Requirement	WEEE / ROHS
Interface	USB 1.1 BUS powered
Net Weight	0.95 Kg (2.1 lb)
Dimensions (D x W x H)	222.5 × 276 × 32.5 mm (8.7"x 10.9"x 1.3")
Protocols	TWAIN Compliant
OS	Windows 2000 / XP / Vista Compatible Linux / WinCE
Software Bundled	Plustek Action Manager 32 NewSoft Presto! PageManager NewSoft Presto! ImageFolio NewSoft Presto! Mr. Photo ABBYY FineReader 6.0 Sprint Adobe Acrobat Reader

## OpticSlim 550

### Features

- Comprehensive Expert for ID/Passport/Check Management
- Lightest and Smallest Portable Design
- No Warm up time needed
- Fast color scanning within 3.4 second
- Unique Cover Holder design for scanning convenience



### Specification

Scanning Type	CIS
Hardware Resolution	600dpi
Scan Modes	Color: Input 48-bit; Output 24-bit Grayscale: 16-bit input, 8 bit output Black & White: 1-bit
Max. scanning area	A5 / 216 × 150 mm (8.5"x 5.9")
Action Button	Copy, OCR, Scan, File, and Custom
Scanning Method	Single Pass
Environment Requirement	WEEE / ROHS
Interface	USB 2.0
Net Weight	1.2 Kg (2.6 lb)
Dimensions (D x W x H)	270 × 270 × 40 mm (10.6" X 10.6" X 1.6" )
Protocols	TWAIN Compliant
OS	Windows 2000 / XP / Vista
Software Bundled	Plustek DocAction NewSoft Presto! PageManager NewSoft Presto! ImageFolio ABBYY FineReader 6.0 Sprint Adobe Acrobat Reader

## TVcam VD100

### Features

- DVB-T TV channel controls and receives DVB-T TV program
- Web camera function
- 640 X 480 (VGA) resolution
- Software setting controls
- Time-Shifting function
- EPG (Electronic Program Guide) and scheduled power-up recording



### Specification

Technology	1/4 inch Color CMOS Image sensor (MI)
Video Resolution	640 x480 (VGA)
Protocol	Support DVB-T TV Protocol
Interface	USB 2.0 BUS power
Net Weight	About 86g ( 0.19 lb )
Dimension (WxDxH)	60.5 x 67.4 x 44.5 mm ( 2.4 x 2.7 x 1.8 inch )
OS	32 bit Windows® XP SP2/Vista and MCE

## IPcam P1100

### Features

- Built-in Motion Detection & E-mail Notification
- Monitor Your Home or Office over the Internet
- Active View AP: Up to 4 camera
- Built-in web server
- Smart I/O Port Function



### Specification

Sensor	Advanced color CMOS image sensor
Effective Pixel	640 × 480 (VGA)
Still Image Capture	Up to 640 × 480 (VGA)
Video Frame Rates	Up to 640 × 480 (VGA) 15fps
Minimum illumination	2 lux (Normal)/ 0.7 lux (w/ frame rate low)
Preset Position	4 Positions
Ethernet	RJ45 (10 Base-T/ 100 Base-TX)
Protocols	TCP/IP , FTP, HTTP, PPPoE, SMTP, DNS, DHCP, SNTP
Software AP	Motion Detection, Video Storage, Network Camera Search Tool
Dimensions	108×108×108mm (4.3×4.3×4.3 inch) unit only
System Support	Window 2000/ XP/ IE6.0, 7.0 or above required
Lens Angle	53 degree
Weight	250 g ( 0.55 lb )
Power Adapter	5VDC / 1.5A
Port	10/100 Mbps Fast Ethernet, I/O input and output 5V and 12V DC (relay)

## IPcam P1000A

### Features

- Built-Microphone for Audio Monitoring and Recording
- Built-in Motion Detection & Email Notification
- Alerting Yourself When Motion-occurs from Image Transfer Function
- Active View AP : View up to 4 camera
- Wide View Angle



### Specification

Sensor	Advanced Color CMOS image sensor
Effective Pixel	640 × 480 (VGA)
Still Image Capture	Up to 640 × 480 (VGA)
Maximum Frame Rates	(VGA) 640x480/10 fps, (SIF)320x240/30 fps, (QSIF)160x120/30fps
Minimum illumination	2 lux (Normal)/ 0.7 lux (w/ frame rate low)
Preset Position	4 Positions
Ethernet	RJ45 (10 Base-T/ 100 Base-TX)
Protocols	FTP, HTTP, PPPoE, SMTP, DNS, DHCP, SNTP, DDNS
Software AP	Motion Detection, Storage, Firmware Update
Dimensions	108 x 108 x 93mm (4. 3x 4.3 x 3.7 in)
System Support	Window 2000/ XP
Lens Angle	94 degree
Weight	250 g ( 0.55 lb )
Power Adapter	5V DC

## IPcam P1100A

### Features

- Built-Microphone for Audio Monitoring Recording
- Built-in Motion Detection & E-mail Notification
- Monitor Your Home or Office over the Internet
- Active View AP : View up to 4 camera
- Wide View Angle
- Built – in web server
- Smart I/O Port Function



### Specification

Sensor	Advanced Color CMOS image sensor
Effective Pixel	640 × 480 (VGA)
Still Image Capture	Up to 640 × 480 (VGA)
Video Frame Rates	Up to 640 × 480 (VGA) 15fps
Minimum illumination	2 lux (Normal)/ 0.7 lux (w/ frame rate low)
Preset Position	4 Positions
Ethernet	RJ45 (10 Base-T/ 100 Base-TX)
Protocols	TCP/IP , FTP, HTTP, PPPoE, SMTP, DNS, DHCP, SNTP
Software AP	Motion Detection, Video Storage, Network Camera Search Tool
Dimensions	108×108×108mm (4.3x4.3x4.3 inch) unit only
System Support	Window 2000/ XP/ IE6.0, 7.0 or above required
Lens Angle	94 degree
Weight	250 g ( 0.55 lb )
Power Adapter	5V DC / 1.5A
Port	10/100 Mbps Fast Ethernet, I/O input and output 5V and 12V DC (relay)

## NVR4000

### Features

- 1/4 inch camera input
- Full Network Function
- Motion JPEG complete recording and playback
- User Friendly System Operation
- Quick search/ installation
- Pre/ post alarm recording
- Scheduling System
- Easy S/W upgrade through network



### Software Application

#### Communication Protocol

TCP/IP, HTTP (Web Services), UPnP (Only for discovering the IGD and open the virtual server), SNTP (for Time & Date), DHCP server/ Fixed IP (for Web cams LAN port), DHCP Client/ PPPoE/ Fixed (for NVR itself), TFTP (for upgrade), CLI (for console operating, used for DEBUG & Factory), SMTP (for alarm notification), FTP Client/ server (for alarm notification), DDNS (Vendor dependent)

#### Software AP

Motion JPEG Complete recording, Timing schedule, System check, Quad mode for simultaneous recording, Playback, Search camera, Backup, Motion detection, Multiple language, Alarm triggered FTP, Pre/ Post alarm recording, 4-ch viewing system / 60 fps per VGA: 640×480 hi-quality/ 120fps per CIF: 320×240 hi-quality and 120fps per QCIF (QQVGA) 160×120 hi-quality

### Specification

**CPU** : ARM 9 Based CPU

**Interface** : 10/100Mbps Ethernet 4LAN port for Web cameras

1 LAN/ WAN port for NVR itself

**Hard Disc** : One IDE Ultra ATA 133 (Support 750G)

**Memory** : 8 M Flash/ 64MB DRAM

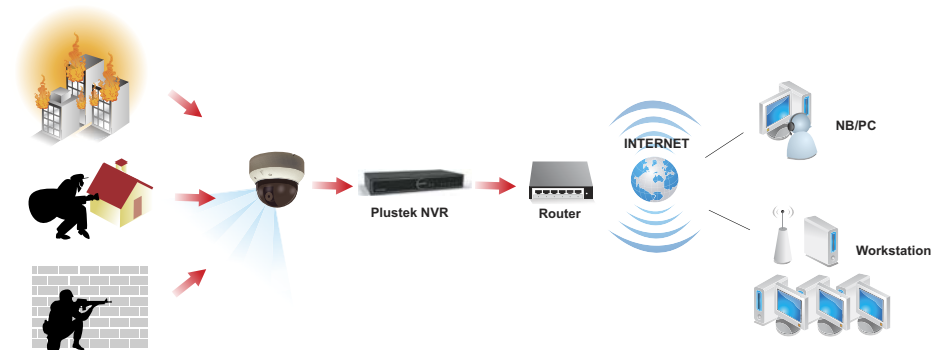
**Display Indicator light** : 7 LEDs, 4 for web cams connection status, 1 for LAN, 1 for WAN, 1 for HDD, 1 for Power status

**Power** : Power Switch/ Button

**Reset** : External power supply 12VDC 5A/ Reset Button (Reset to Factory Setting)

**Alarm** : Audio Buzzer alarm (for alarm notification)

**Dimensions** : 300×152×44mm ( 11.81 x 5.98 x 1.73 inch ) unit only



## Plus@com PC2000

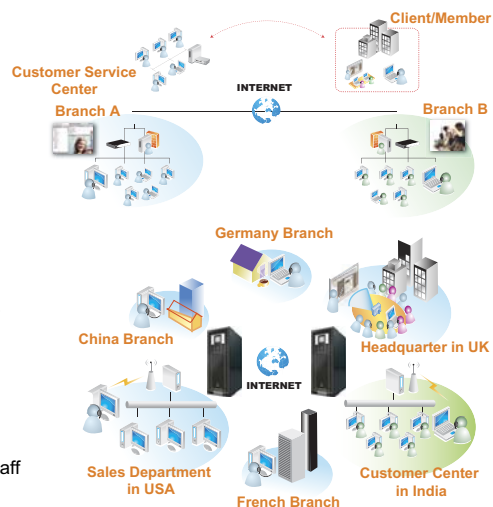
### Product Features

- Real-time communications: With the Internet, dispersed members can interconnect with each other to reach common consensus.
- Easy operation and installation: Plus@com can be setup at any designate location with the ease of operation and deployment.
- Simplex user interface: With a user-friendly interface, it offers instant text, voice and video communications.
- Real-time video conference: With the Internet, staffs can call meeting no matter within or outside the office.



### Applications and Scenarios

- Instant communications among branch office
- Connection enterprise with remote factory
- Distance education and external seminar
- Product demonstration and project discussion
- Distance interview and internal training
- Information and Organizational communications
- Customer relationship management and support
- Direct negotiation between factories and stores
- Communication between disperse staff overseas
- Direct selling among multi-locations
- Regular meeting and instant conference
- Prompt technical service and support
- Consultation between sellers and buyers
- Communication between customers and sales staff



### Competitive Strength

Category	PLUS@COM	Traditional conference
Equipment expense	Web camera (below \$2000)	Video camera (above US \$3,000)
Conference location	Anytime and anywhere	Only at conference room
Required bandwidth	At least 512 K	512 K at each point
Video security	IP-cam and system Integration	N/A
Payment method	Pay just once fee	Lease fee (above US \$ 40 per hour)

### Hardware Specifications

**System Processor** : VIA Luke CoreFusion 1000 MHz

**System Memory** : 1GB DDR 400 SDRAM

**System Storage** : 256MB DOM

**Connectors** : 1x10/100Mbps LAN Port, 1x10/100Mbps WAN Port, 1x Parallel Port, 4x USB Ports

**Configuration Interface** : Remote access via web browser

### Client AP System Requirement

**CPU** : Pentium® 1 GHz

**RAM** : At least 256 MB (Recommended 512 MB)

**Network Card** : Ethernet 10/100Mbps

**Hard Disk** : At least 50 MB free space on hard disk

**Other Devices** : Windows® Compatible sound card, earphone, microphone, webcam

**OS Compatibility** : Windows® XP, Windows® 2000, Windows Vista

## MultiServer MFA1000S

MultiServer is specially designed for small and medium enterprises, SOHO, schools, and internet-related industries. It provides an overall business solution that is highly stable and easy to operate with low costs. The web management interface and icon design are very user-friendly for general users to easily configure server settings.

It is the best useful tool for small and medium enterprises to increase work efficiency and decrease operation risk.

MultiServer offers many value-added services including shopping cart, photo albums, SMS, and network phone. It is the perfect IT network product for you to save money.



### The major functions of MultiServer

- Web Server
- Email Server
- Web Email
- Anti-Virus
- Anti-Spam
- Firewall
- FTP Server
- QoS
- MRTG
- VOIP (Options)
- SMS
- PHP MySQL
- NAT Server
- Samba Server
- DHCP Server
- DNS Server
- Dynamic DNS Server
- System Recovery



### Why Purchasing?

#### Easy Operation

3 mins step-by-step installation procedure, any IT personnel can manage it with ease.

#### Better Value

Embedded operating system has no need to spend extra money on software or license fees. It offers complete email management services as well as the function and safety that are not available in current market.

#### System Recovery

System and email settings can be reverted to any time point in the past; data will not be damaged or lost.

## Product Feature and Cost Comparison

	Free Email Account	Rented Email Account	MultiServer
Cost	None	Monthly or Yearly Rentals, Charged on User Basis with Update Cost	Hardware Only
Company Name Display	None	Yes	Yes
Update Completion Time	New Application	Slow	Immediate Update
Transmission Speed	Very Slow	Slow	Fast
Storage Space	2MB Approx	50MB Approx	Unlimited
Management	Impossible	Not by Users	By Users
Maintenance Cost	None	Recurring Expenses	None

	SOHO Setup Cost	SME Setup Cost	MultiServer
System Software	Win 2003 Server 5 Concurrent User Edition: US\$ 1,000 Approx	Win 2003 Server 50 Concurrent User Edition: US\$ 2,500 Approx	Built-in: Cost-Free
Mail Server	Exchange 2007 Server 5 Concurrent User Edition: US\$ 1,200 Approx	Exchange 2007 Server 50 Concurrent User Edition: US\$ 4,200 Approx	Built-in: 500 Concurrent User Edition: Cost-Free
Hardware	Business Computer US\$ 600 Approx	Small Server US\$ 2,000 Approx	Economic
Total Cost	US\$ 2,800 Approx	US\$ 8,700 Approx	Economic

## Software Specifications

**Email Transmission Protocol** : POP3, SMTP, IMAP

**Web Email** : Receive, edit, and send emails by Microsoft Internet Explorer (Version 5.0 or above)

**Supporting Printer Server** : Windows 95/98/ME/2000/XP/Vista, supporting USB printers and parallel port (LTP), with network printer server feature

**Internet Connection** : Fixed IP, Dynamic IP, PPPoE, PPTP, DHCP address settings

**Routing** : DHCP, NAT, Firewall, IP, Port filtering, supporting automatic and manual IP allocation, and allowing IP range configurations

**Data Transfer Rate** : 10/100Mbps auto-switching

**Network Transmission Protocol** : File Transfer Protocol (FTP), Internet (Browser), Microsoft Network (SMB)

**Networking Transaction Protocol** : TCP/IP, NetBEUI

**Web Server** : Supporting html - http1.0 + Version (GIF, Flash, Java Script, SSL, JPG) and PHP, MySQL

**Network Hard Disk** : File Transmission Protocol (Pure-FTPO Ver.1.2.9)

Supporting Non-Continuous File Transmission

Secure File Transmission/Fast File Transmission

**Language Support** : English, Simplified Chinese, Traditional Chinese, Germany, French, Japanese

**Internet Connection** : IEEE 802.3 10Mbps Ethernet / IEEE 802.3u 100Mbps Fast Ethernet

IEEE 802.3x Automatic Flow-Controlled Network

## Hardware Specifications

**System Processor** : VIA Luke CoreFusion 1000 MHz

**System Memory** : 512MB DDR 400 SDRAM (Max: 1GB)

**Operating System** : Linux 2.6 Embedded System

**Storage** : System Storage: 256MB DOM

**Data Storage** : IDE or SATA 3.5" hard disk (optional)

**Connectors** : 1x10/100Mbps LAN Port / 1x10/100Mbps WAN Port

1xParallel Port / 4xUSB Ports

**Management Interface** : Remote access via web browser

**Dimensions (HxDxW)** : 280 x 210 x 100 mm

**Weight** : 3kg

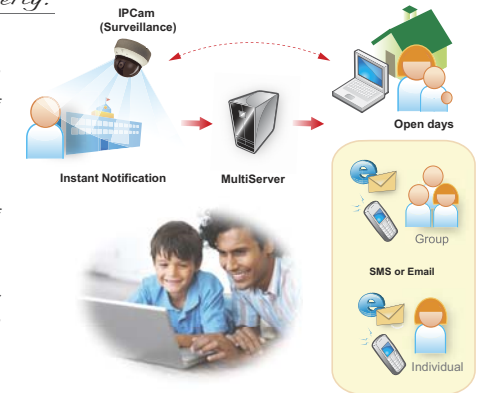
## case 1

### Intercommunication

Mr. Bartlett,  
Mayfield Primary School

" **MultiServer** offers me the best solution and the convenience to reschedule my class events and publish news. It helps me keep close contact with students and parents as well as send latest notifications. Also, the surveillance feature ensures the safety of our school property.

My colleagues and I use the server in a diversity of ways. For example, we planned the class activities before the beginning of term and published it onto the class bulletin. Students and parents can browse each item and get schedules online. The notification features sends reminders in the manners of emails. On school orientation day, students and parents could remotely watch live orientation. We also use the server to monitor school property and help reduce wilful damages.



## case 2

### Interactive Learning Platform

Miss. Kerr,  
Camas High School

" **MultiServer** is a user-friendly and convenient tool to offer an instant and interactive learning platform. It really saves time, improves study skills and reduces knowledge gap between the metropolitan areas and the rural areas."

It's a big challenge for me to memorize all the new and update course content and related references, but with MultiServer I can effortlessly obtain the information within moments. The server makes it easy to have online discussion between me and my team members, even if we are miles apart. Furthermore, it offers opportunities for me to exchange ideas with other students in distant classrooms, particularly in group projects and excises. If I have any questions, my tutors can offer support in real time and assist me resolve the problems.

Thanks to MultiServer's interactive and collaborative environment, my writing skills and topic structure development has been greatly improved.

